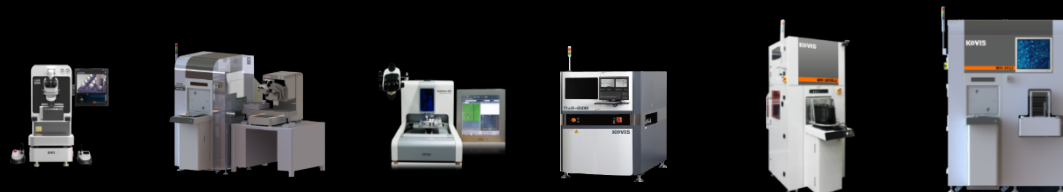
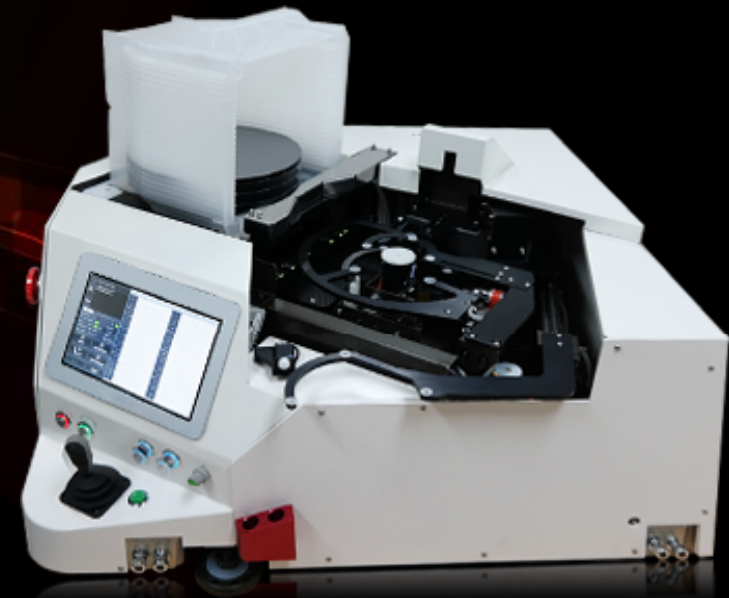


# Fully Automatic Wafer Handling System

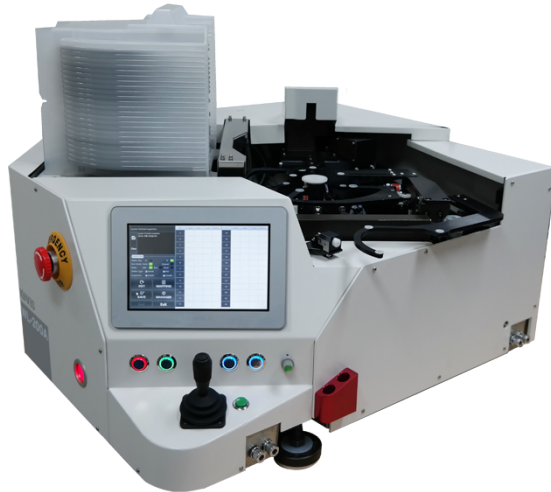
## WL-200A



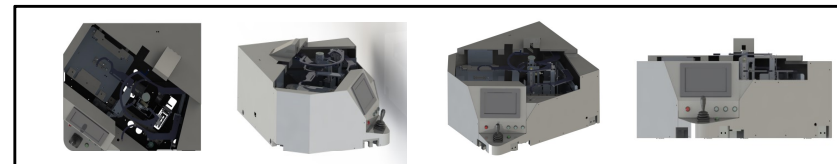
Creation & Innovation originated from Simplification & Convergence

# Fully Automatic Wafer Handling System, WL-200A

WL-200A was developed to respond the demand for more downsized wafer handlers for inspection and hands-free wafer handling in a concept of "compact" on inspection stage. More precise system control of WL-200 made it possible to handle ultra thin wafer below 100um in the most safe system control of embeded board level.



- Innovative User Interface with Window based SW



System Features		KOVIS WL-200A
Compatible wafer size	Diameter	4~8 inches
	Thickness(standard)	300 μm
	Thickness(thin wafer Option)	300~100μm
Compatible carrier		SEMI 25(26) wafer carrier
Centering		Non-contact, photoelectric sensors
Notch / orientation flat detection		Non-contact, photoelectric sensors
Operation / display section		Minimum buttons and interactive touch panel PC interface
External dimensions (W x D x H)		536 x 626 x 350
Weight		50kg
Safety standards		Electrical safety : CE mark compatible
		SEMI : S2-0706,S8-0307, F47 compatible
		Laser safety : FDA Class 1
utilities		Power supply: AC 100~240V, 50/60 Hz, 1.5A~0.7A
		Vacuum:~80kPa
		Connection tube diameter:φ 6mm



# Fully Automatic Wafer Handling System, WL-200A



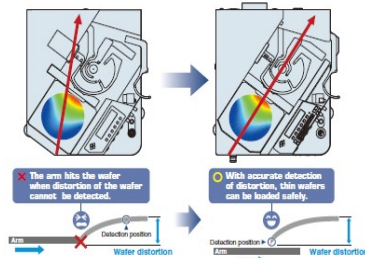
Youtube Mov. : <https://www.youtube.com/watch?v=EOJwVcDXVF0&feature=youtu.be>

## • Stable thin wafer loading capability

To meet up the trend of downsizing in semiconductor wafer, WL-200A was designed with the capability of handling ultra thin wafer below 100um.

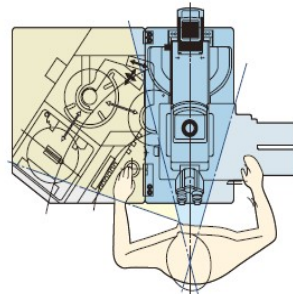
## • Improved high sensitive wafer sensing capability

Optimized wafer beam sensing capability makes it easy to sense ultra thin wafer even with inevitable wafer warpage.



## • Ergonomic & intuitive design & Interface

The innovative design & system interface provides the most convenient and easier operation to minimize fatigue of long time inspection.



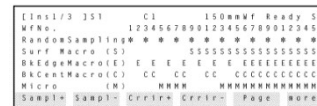
## • User friendly operation Interface & GUI OS SW

Unlike inconvenience caused by existing old technology of handlers, KOVIS WL-200A provide the most optimized user interface.

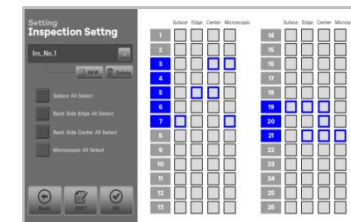


## • Window GUI Operation SW

Slimmer, Window GUI SW allows one-touch reporting, data producing through simpler networking.

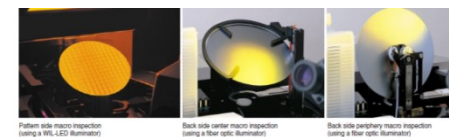


<Existing competitor's LCD GUI>



<KOVIS GUI OS SW>

## • Controllable Wafer loading speed, Tilting angle, Top side macro inspection, Back side center & side inspection. Easier interconnection to other optic instruments or testers with desktop based



Pattern side macro inspection (using a WL-LED Illuminator)

Back side center macro inspection (using a fiber optic Illuminator)

Back side peripheral macro inspection (using a fiber optic Illuminator)

KOVIS is providing renovated, upgraded window-based, KOVIS WL-200A IC Inspection handler, but also proposing to customers who already have old Nikon wafer handlers, with Eco-program of renewing existing old (even broken) Nikon NWL series IC Inspection handlers.

Eco-program is to renewing the old Nikon machine to KOVIS WL-200A. KOVIS shall recycle the basic mechanical frames and parts. But all the electric parts such as sensors, motors, vacuum parts and worn-out parts, tubings, wires, cables shall be exchanged with brand new latest ones and the renewed system shall be controlled by KOVIS control board and window based program.

### ❖ KOVIS ECO-PROGRAM

### Recycling & Renewing

Existing Nikon Handler

